

Partner Speech on 2005 Cisco Voicecomm

Cisco IP Communications over Satellite

KrisNet Inc
Dec. 7, 2005

Agenda

- KrisNet
- KrisNet Solutions



KrisNet Inc.

KrisNet Premier Certified Partners
IP Communications, VPN/Security

Cisco
Wireless LAN Specialization

IP Communications

Productions

가

Solution

가

Cisco Systems

IP Communications

Cisco

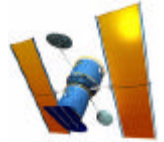
- No. of installed IP Phones : 2,500 phones
- No. of CallManager Installation : 160 Times

Cisco vs. Competitors

	Cisco	3 Com	Nortel	Avaya	Microsoft
Market Cap.	122.96B	1.44B	11.01B	3.94B	274.00B
Employees	34,000	1,925	34,150	14,900	57,000
Qtrly Rev. Growth	10.1%	-6.2%	3.8%	21.5%	4.9%
Revenue	24.15B	657.95M	9.92B	4.46B	38.92B
Gross Margin	67.33%	37.7%	41.15%	47.78%	83.89%
EBITDA	8.47B	-81.45M	295M	552M	17.44B
Oper. Margins	29.98%	-19.89%	-0.6%	7.93%	42.55%
Net Income	5.58B	-156.22M	-209M	22.7M	11.24B

Yahoo Finance

Communications with Remote Sites



Plant
Internet

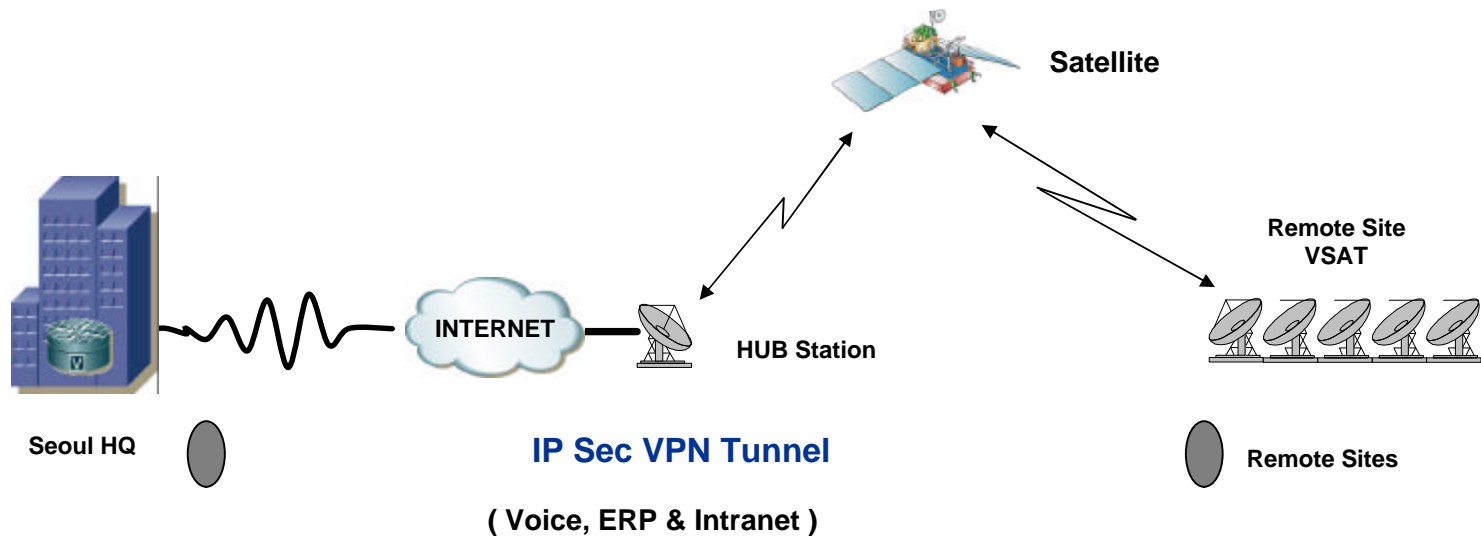


VSAT ()
Down/128K UP
Shared

ISP
CIR 1 : 8

256K

Remote Sites linked with Satellite

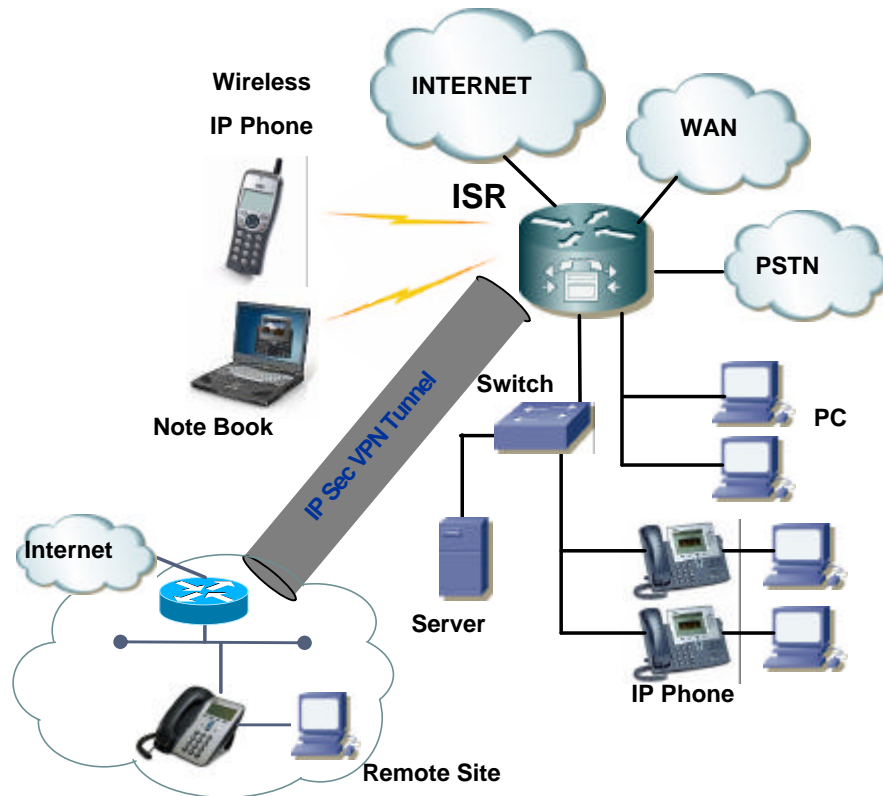


Solution

Internet



VPN Solutions with ISR

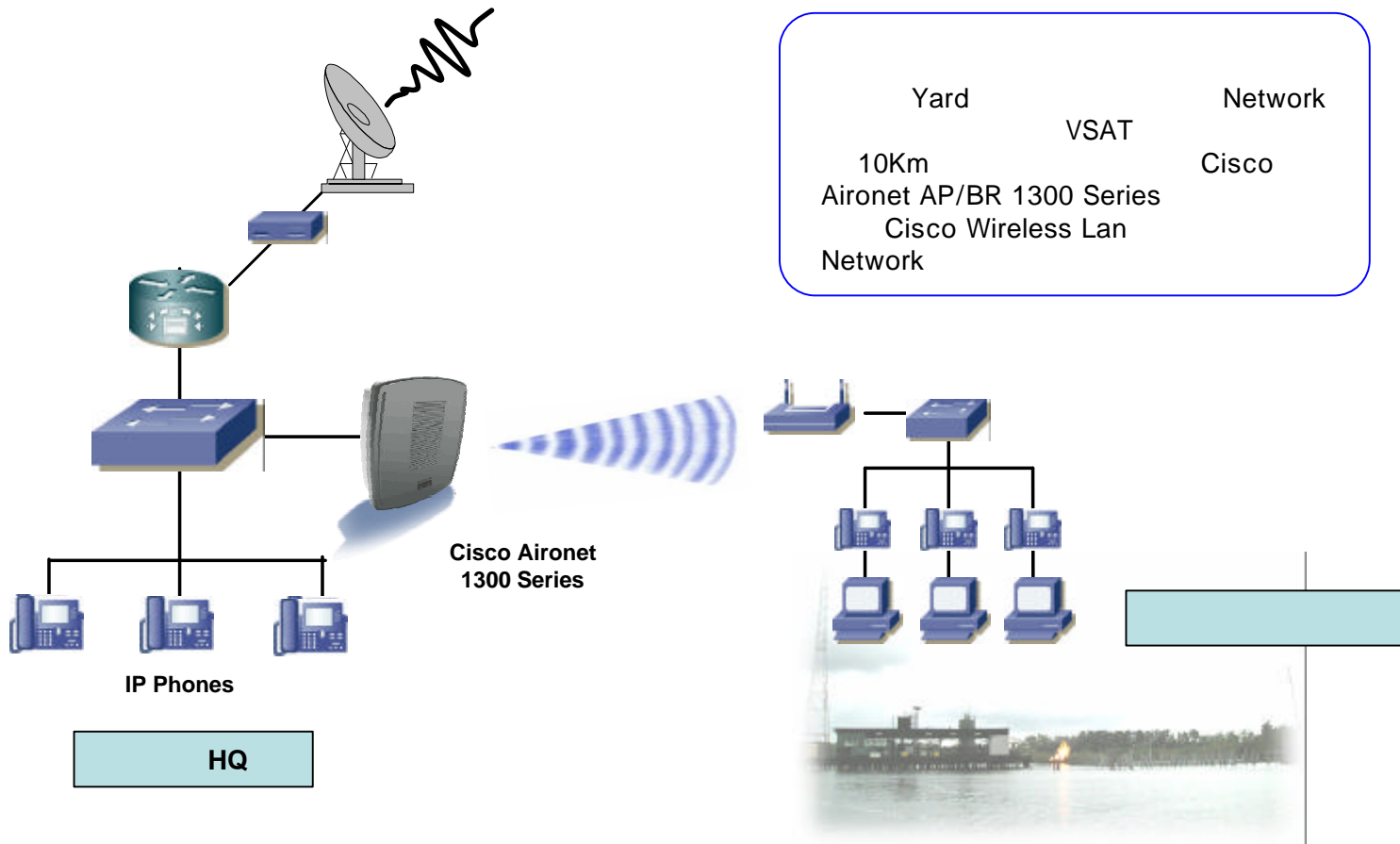


V3PN

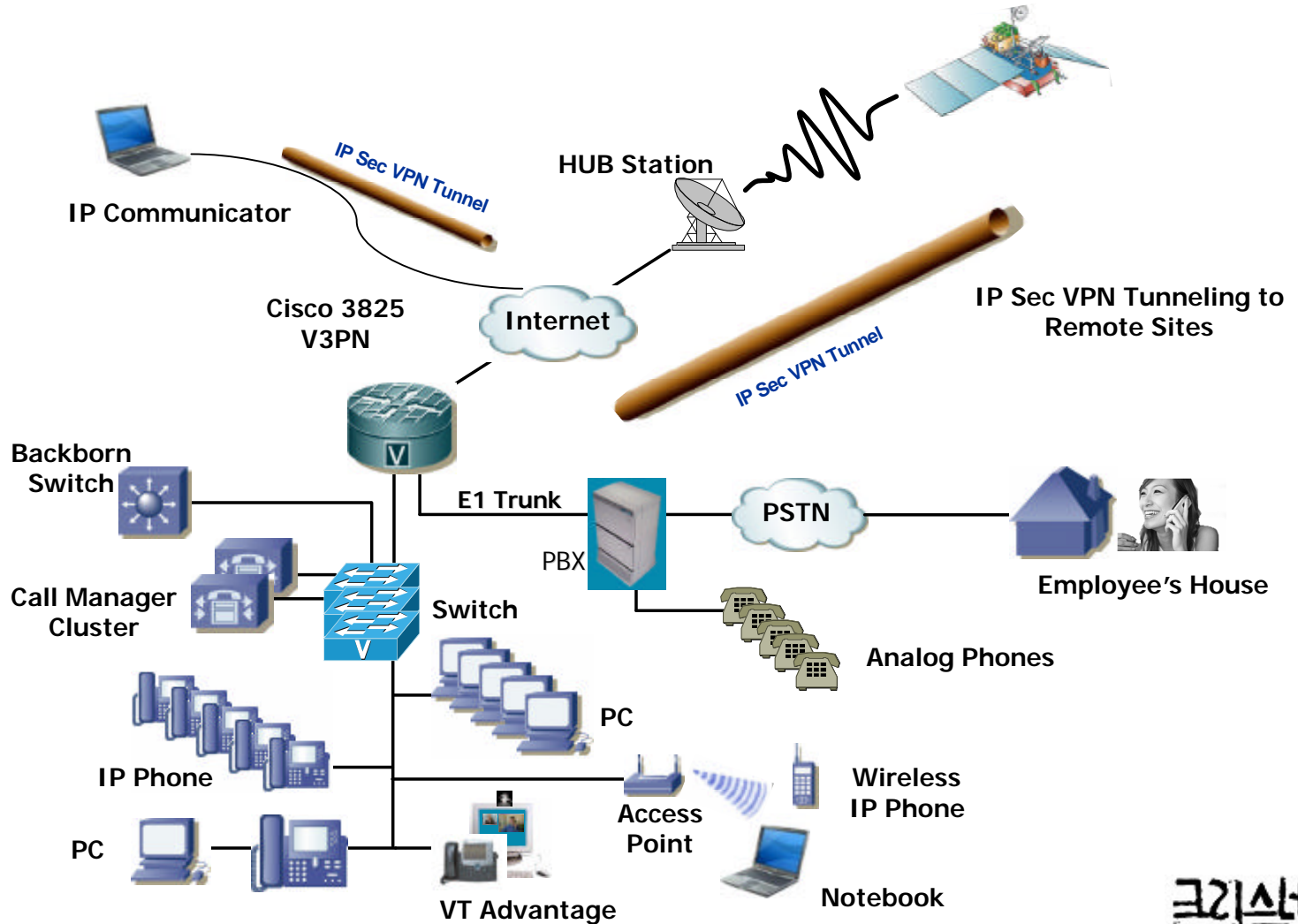
가

VPN IPC

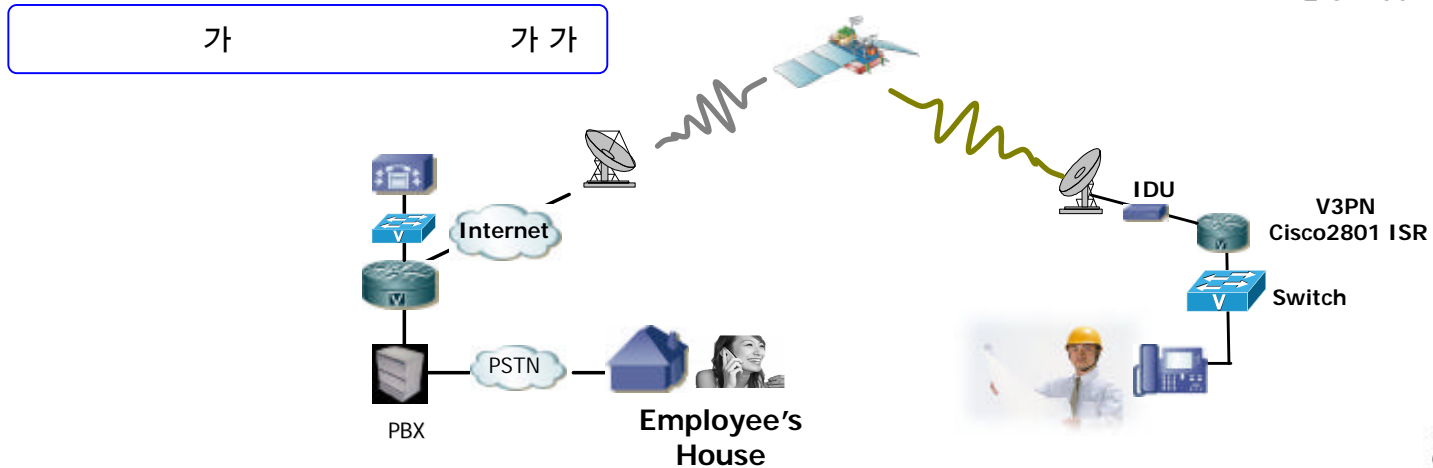
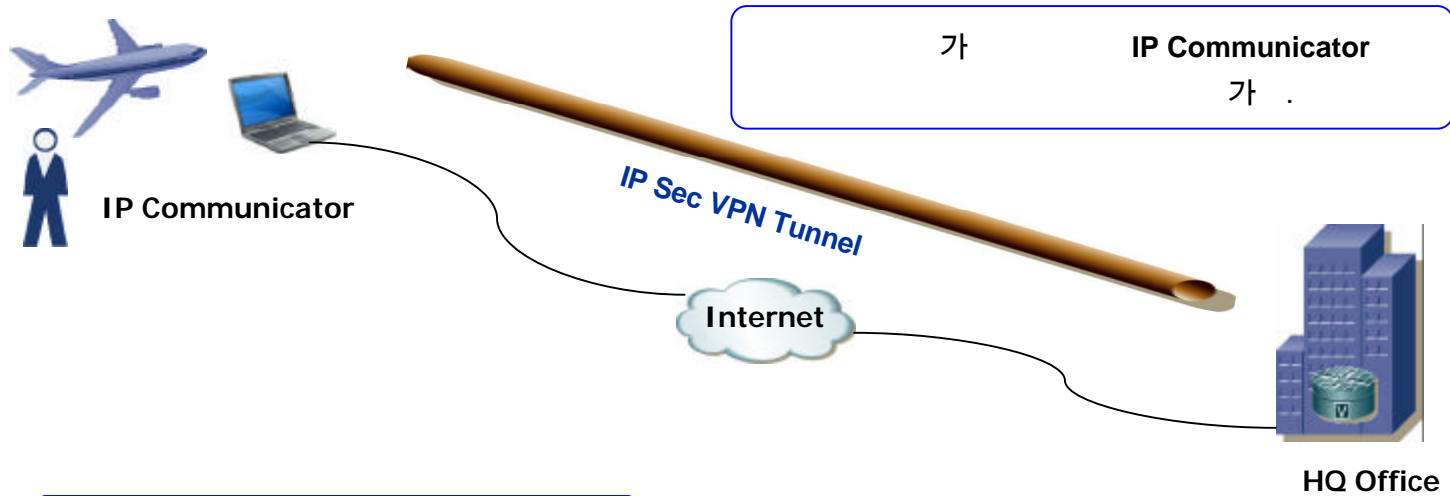
Wireless Solutions



IP Telephony Network Architecture at HQ



Additional Benefits



Known Service Providers for VoIP over Satellite



- **Ground Control** VOIP for Direcway or Galileo users
- **SatEuro.net** VoIP enabled satellite Internet services. Worldwide coverage
- **Skycasters** VOIP for Directway users
- **SDN Global** Satellite VoIP over dedicated international MPLS backbone with full QoS. Covers 85% of populated world.
- **Speedway** VOIP for iDirect and Linkstar users
- **Transcom** ISP VOIP for any high contention VSAT systems
- **BusinessCom** Internet via Satellite VoIP and VSAT services based on the LinkStar, iDirect

LinkStar iDirect, Directway VoIP
IP Communications

IPCC Solutions

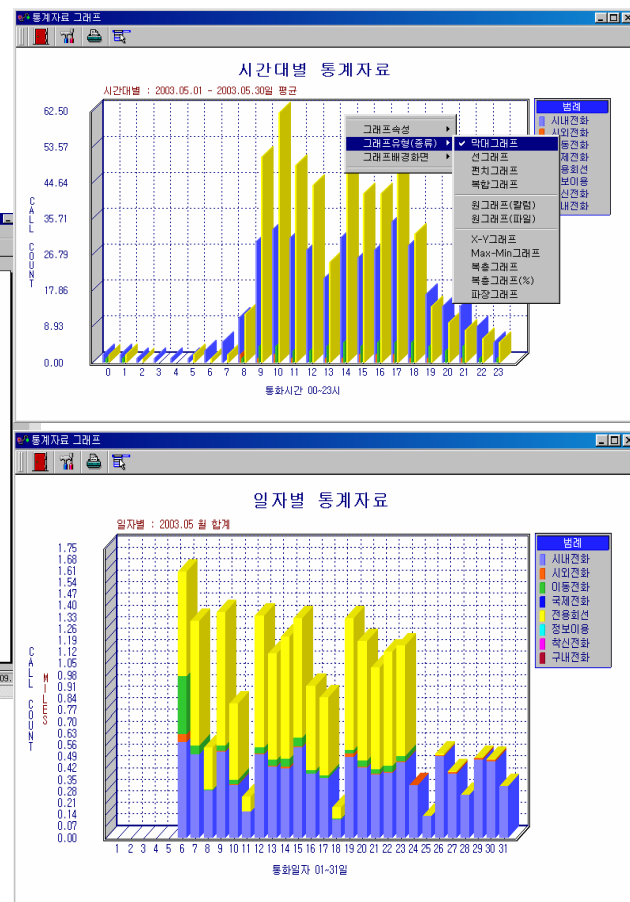
The image displays three screenshots of the IPCC (Intelligent Personal Communications) software interface, illustrating its configuration and monitoring capabilities.

Top Left: IPCC Administrator - [Users]
This window shows the 'Users' configuration screen. It includes a tree view on the left for navigating through the configuration hierarchy (Configuration > Users). The main area contains fields for 'User ID', 'User Name', 'Department', 'User Type', 'Ext. Number', 'Password', and 'PIN Password'. Below these are checkboxes for 'Call Authority' (Local, Long Distance, International, Business, Mobile, Special) and 'Auto Connection' (Interval, Set). A 'Save' button is at the bottom right.

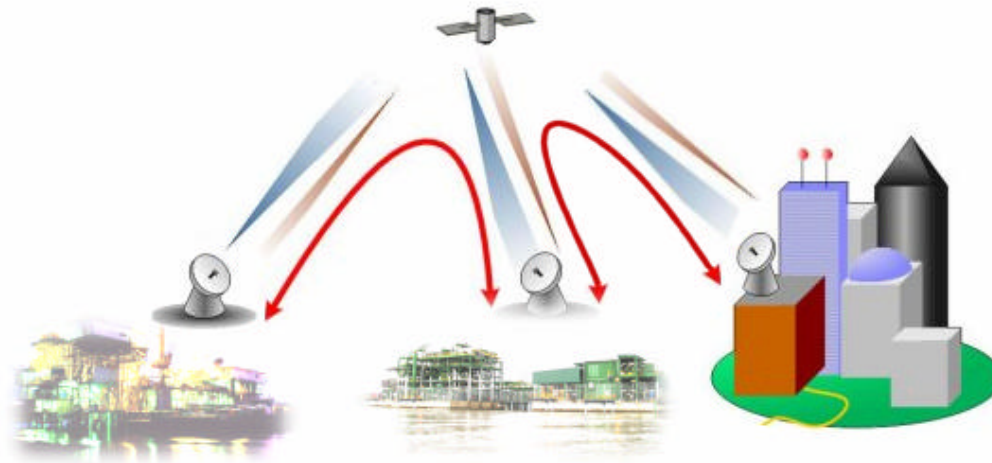
Top Right: IPCC Administrator - [Device]
This window shows the 'Device' configuration screen. It includes a tree view on the left for navigating through the configuration hierarchy (Configuration > Device). The main area contains fields for 'Device ID', 'Device Type', 'Address', 'Dest. Type', 'Destination ID', 'ANI', and 'Call Flow'. Below these are checkboxes for 'Enabled' and 'Live & Personal Use'. A 'Save' button is at the bottom right.

Bottom Right: IPCC Request Manager
This window shows the 'Request Manager' interface. It displays a list of requests with columns for 'Request ID', 'Request Name', 'Request Type', 'Request Status', 'Request Date', and 'Request User'. The table contains multiple rows of data, including request IDs, names, types, and dates.





Future Link Solutions over Satellite



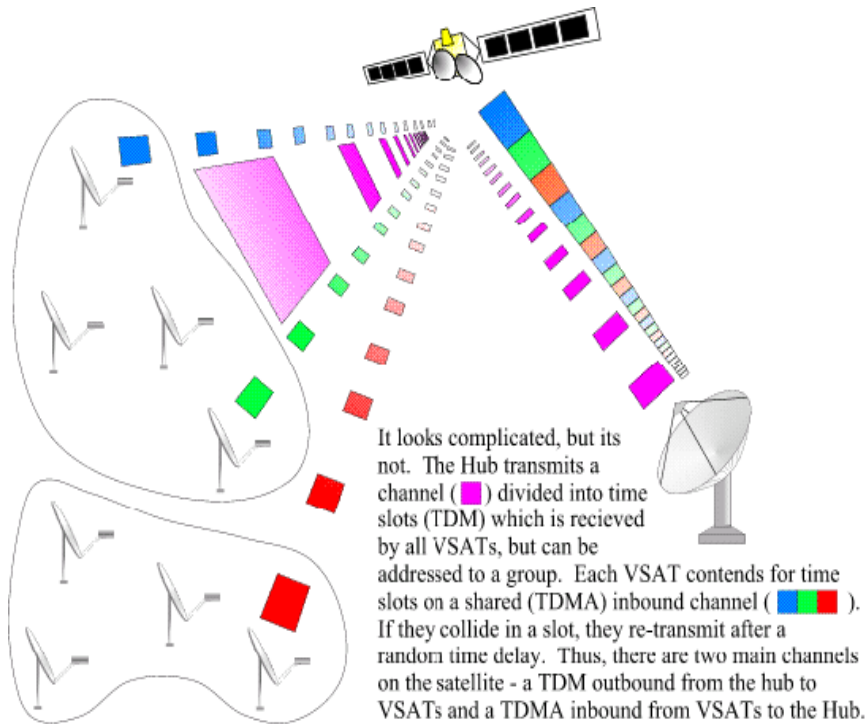
Remote Site 1

Remote Site 2

HQ Office



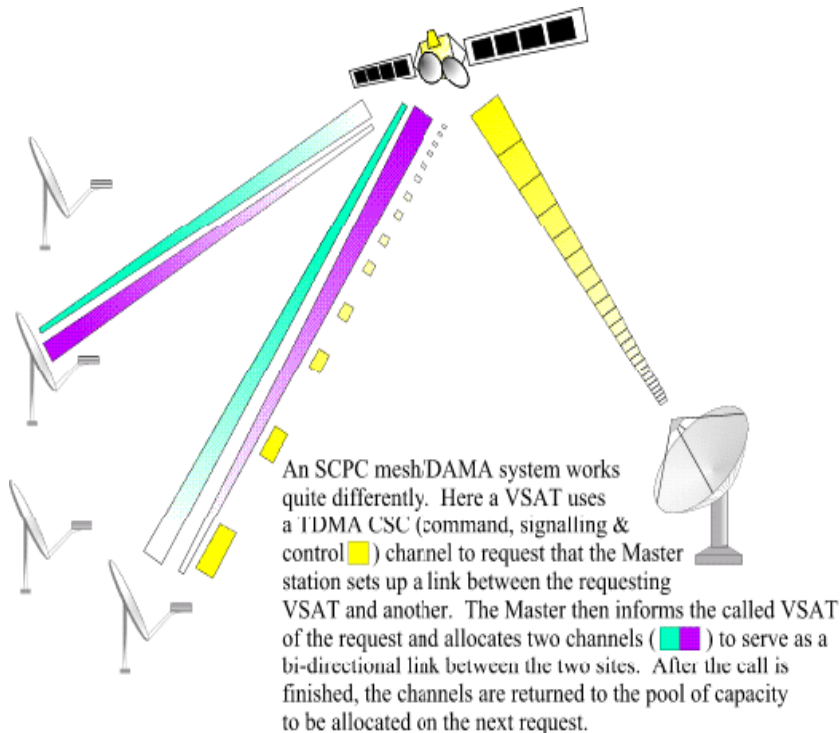
Star Topology VSAT Network



6
hub station 75
2.4 VSAT
star
TDM/TDMA VSAT 가
.

. TDM/TDMA
X.25 frame relay
.

Mesh Topology VSAT Network



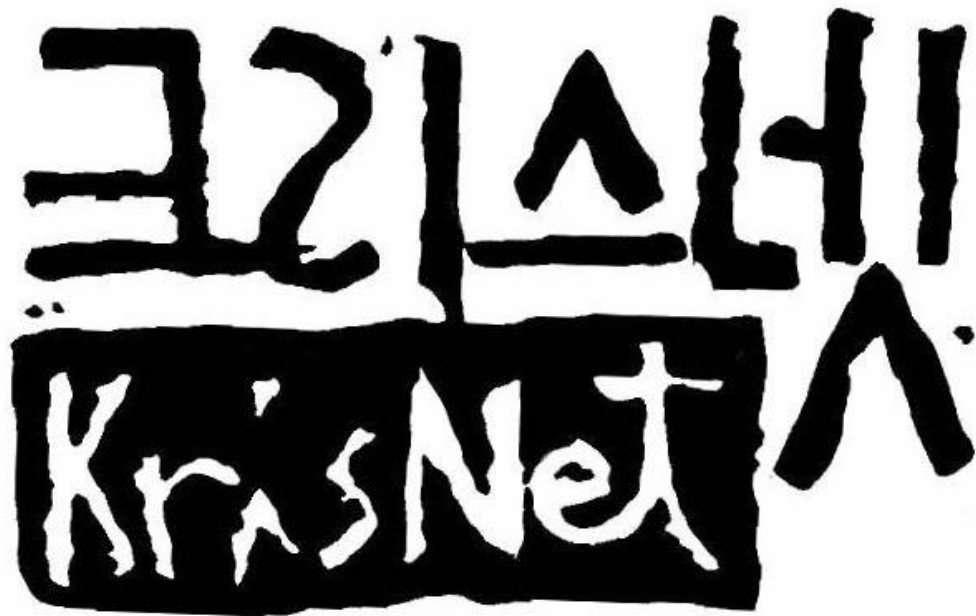
Mesh

(TDMA)

demand assigned multiple access
(DAMA) Mesh
Star

hub

star



CISCO SYSTEMS



IPT
Solution
Partner

WWW.KRIS-NET.COM

